

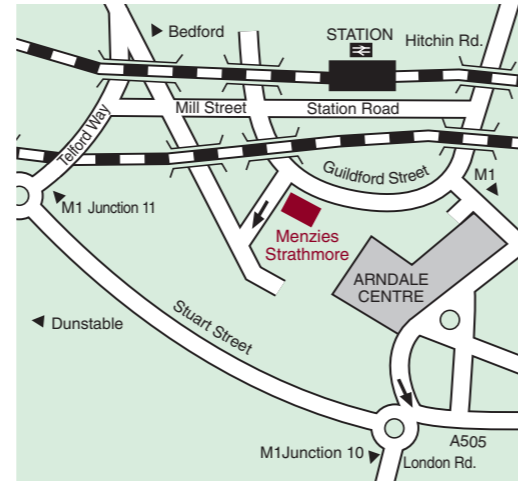
Location

Facilities

- 152 en-suite bedrooms including executive rooms and a suite
- Brasserie restaurant
- Coffee Bar
- 5 function rooms
- Wifi access
- Car parking is available at the adjacent NCP car park

Waves Health & Leisure Club

- Indoor swimming pool
- Steam room
- Sauna
- Spa pool
- Gymnasium
- Beauty room



For detailed directions please visit our website www.menzieshotels.co.uk

MenziesStrathmore

Arndale Centre • Luton • Bedfordshire • LU1 2TR
Tel: 01582 734 199 • Fax: 01582 402 528
Email: strathmore@menzieshotels.co.uk



A unique portfolio of distinctive hotels located throughout England and Scotland

Central Reservations 0845 600 3013
www.menzieshotels.co.uk

MenziesStrathmore



LUTON



Conference & Events

Hotel



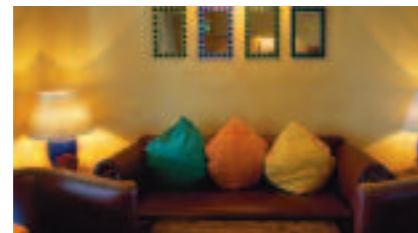
Conveniently located in the centre of Luton, just four miles from J10 of the M1, the Menzies Strathmore is a modern hotel offering an extensive range of facilities.

The spacious lounge and superb Brasserie restaurant offer a stylish and informal environment in which to dine or relax.

The hotel has 152 bedrooms including executive rooms and a suite.

Every bedroom has been designed and equipped with the business traveller in mind creating a welcoming and comfortable environment.

Contemporary and relaxed atmosphere.



Conference & Events

With five function suites ranging from dedicated boardrooms to a suite seating up to 250 delegates the Menzies Strathmore can accommodate a wide range of meeting and private dining requirements.



To complement the superb facilities our **PremierMeetings** package focuses on every detail to ensure your experience is commensurate with the quality of the environment.



The ideal venue for meetings, conferences, residential training courses and private dining.

ROOM NAME	WINDSOR	MOUNTBATTEN	SPENCER	CASTLE	MEY	STIRLING	SUNDERLAND
FLOOR	Second	Second	Second	Second	Second	Second	Second
DIMENSIONS (in metres)							
Length	19.53	16.99	16.99	9.40	5.79	5.79	7.47
Width	16.99	12.04/10.90	7.39/6.40	5.79	4.74	4.54	3.32
Height	3.71/2.74	3.71/2.74	3.02	3.35	3.35	3.35	2.77
Area	331	204	125	54	27	26	24

CAPACITIES

Theatre style	250	120	120	30	15	15	-
School room	120	60	60	20	6	6	-
Boardroom	60	30	40	20	12	12	12
U-Shape	50	30	40	20	10	10	-
Cabaret	130	60	60	20	-	-	-
Reception	250	90	120	40	-	-	-
Dinner	200	60	90	35	-	-	-

TECHNICAL INFORMATION

Air Conditioning	YES	YES	YES	YES	YES	YES	YES
Natural Daylight	YES	YES	YES	YES	YES	YES	YES

